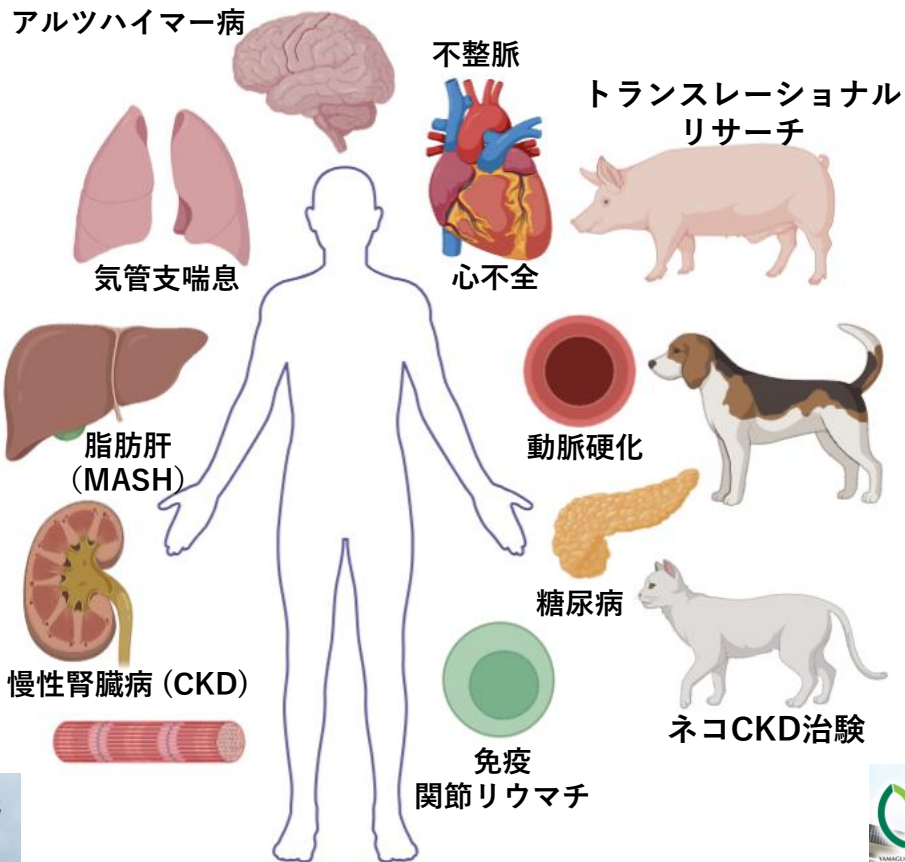
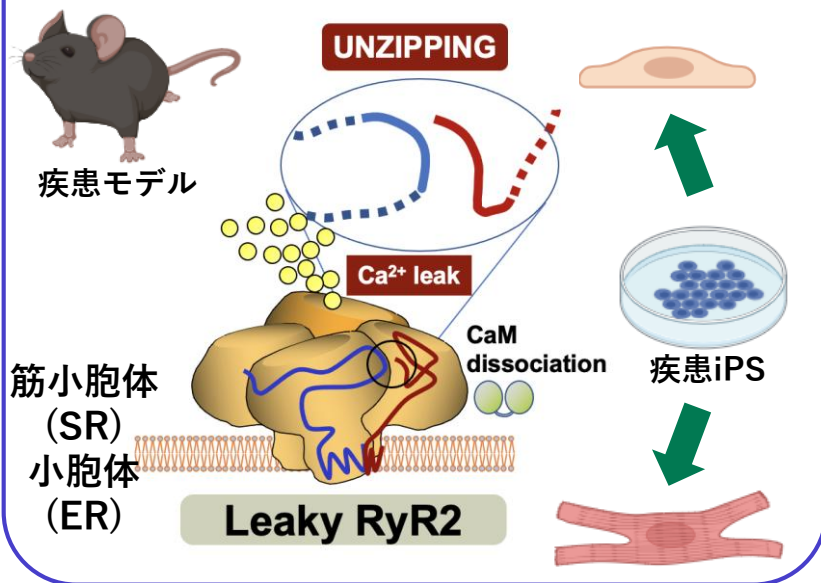


## RyR2安定化薬を用いた健康長寿社会の実現

## 新規RyR2安定化薬 創薬

### 病態解明



リード化合物

アカデミア発  
ベンチャー  
企業導出



診療科との共同研究体制

人と伴侶動物の共通の  
健康問題に取り組む

医獣連携



紹介病院との治験体制

## Achieving Healthy Longevity with RyR2 Stabilizer

## Novel RyR2 Stabilizer Drug Discovery

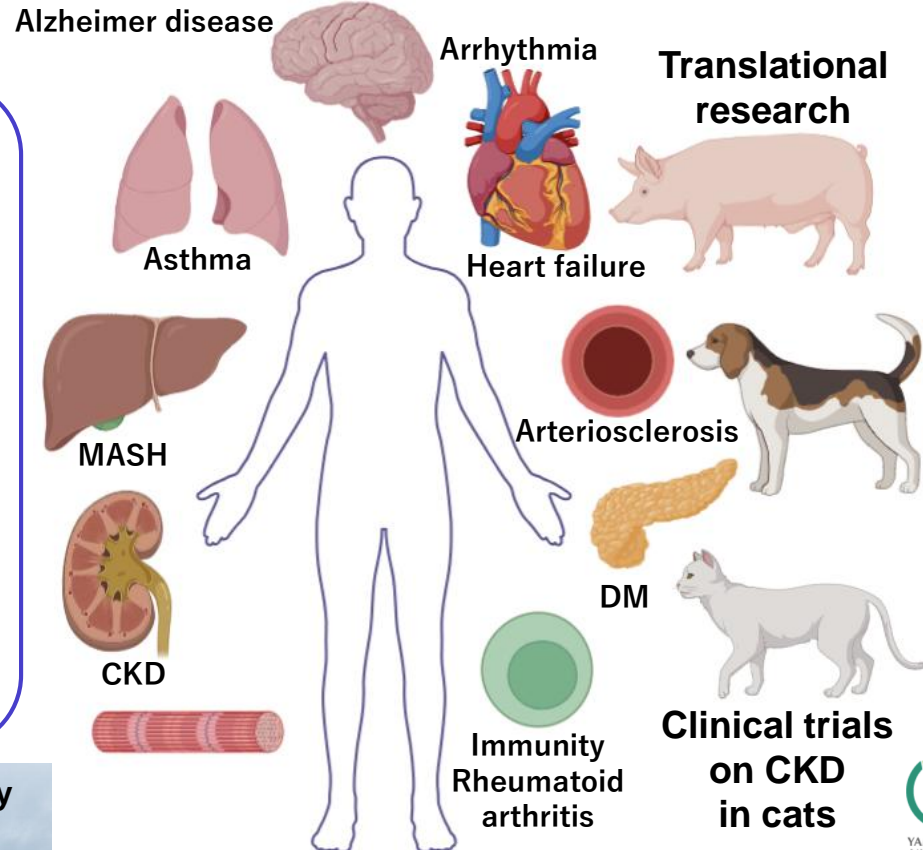
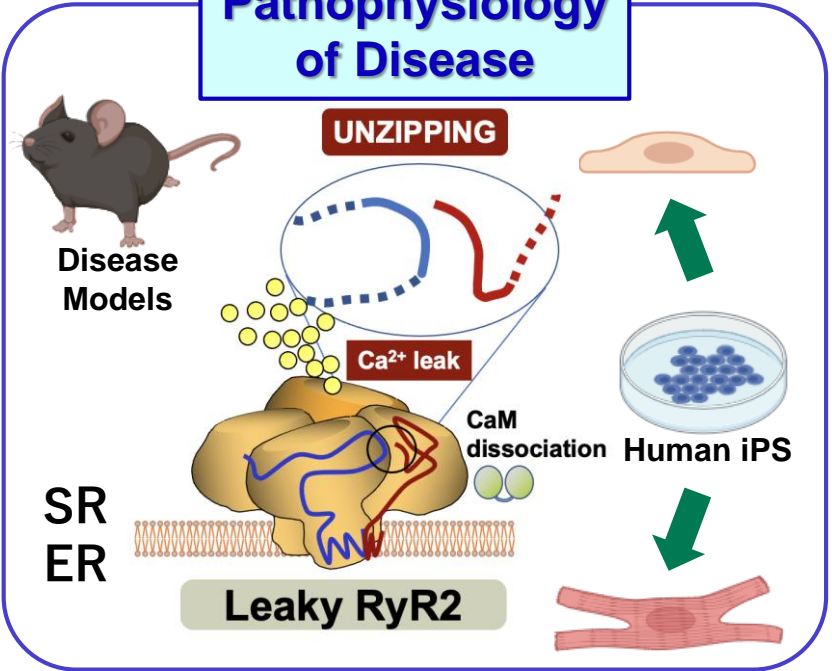


Lead compounds



Academia Venture  
Out-licensing

### Research on Pathophysiology of Disease



Work on common health issues between humans and companion animals

Medical and veterinary collaboration



Yamaguchi University Hospital



Yamaguchi University, Animal Medical Center

Collaborative research with departments

Clinical trial with referral partners